

PL-AC56 Kit

1200 Mbps Wi-Fi HomePlug® AV1200 Powerline Adapter Kit

Quick Start Guide

Applicable to PL-AC56 and its multiple-pack kits.
This QSG uses PL-E56P powerline adapter to work with PL-AC56 powerline extender.

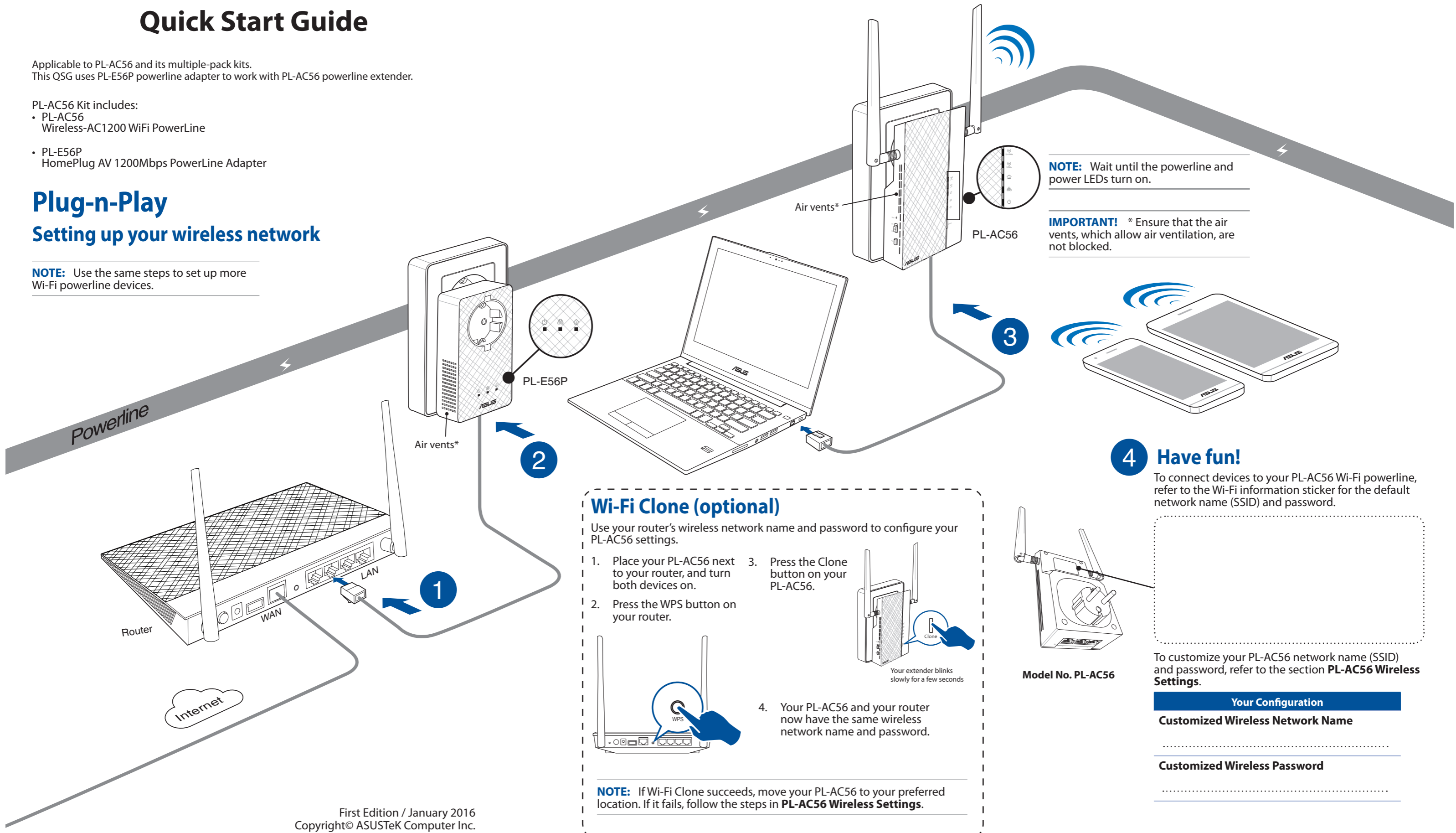
PL-AC56 Kit includes:

- PL-AC56 Wireless-AC1200 WiFi PowerLine
- PL-E56P HomePlug AV 1200Mbps PowerLine Adapter

Plug-n-Play

Setting up your wireless network

NOTE: Use the same steps to set up more Wi-Fi powerline devices.



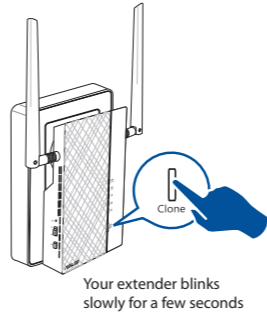
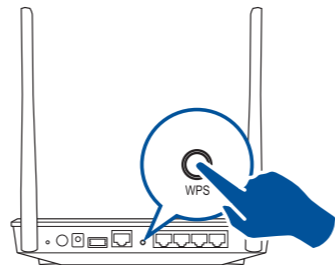
NOTE: Wait until the powerline and power LEDs turn on.

IMPORTANT! * Ensure that the air vents, which allow air ventilation, are not blocked.

Wi-Fi Clone (optional)

Use your router's wireless network name and password to configure your PL-AC56 settings.

1. Place your PL-AC56 next to your router, and turn both devices on.
2. Press the WPS button on your router.
3. Press the Clone button on your PL-AC56.

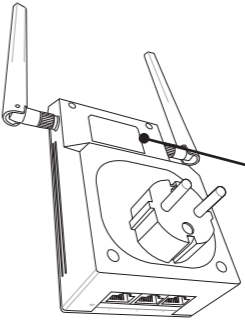


4. Your PL-AC56 and your router now have the same wireless network name and password.

NOTE: If Wi-Fi Clone succeeds, move your PL-AC56 to your preferred location. If it fails, follow the steps in **PL-AC56 Wireless Settings**.

4 Have fun!

To connect devices to your PL-AC56 Wi-Fi powerline, refer to the Wi-Fi information sticker for the default network name (SSID) and password.



Model No. PL-AC56

To customize your PL-AC56 network name (SSID) and password, refer to the section **PL-AC56 Wireless Settings**.

Your Configuration
Customized Wireless Network Name
.....
Customized Wireless Password
.....

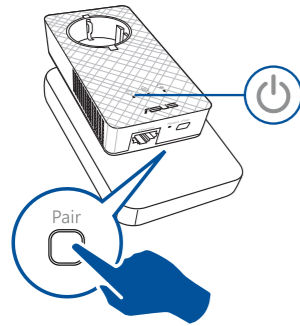
Pair button (optional)

Pairing devices via the Pair button

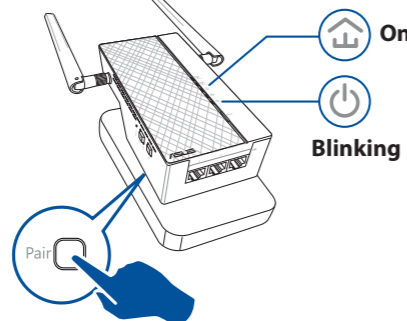
Use the Pair button to create a secure powerline network, and add up to 8 powerline devices to this network.

Creating a secure powerline network

1. Press the Pair button on your PL-E56P.

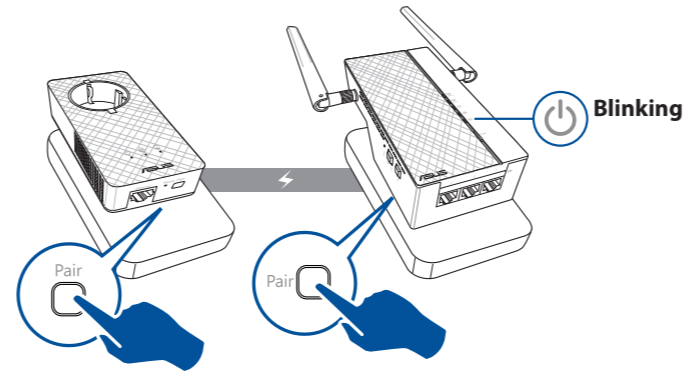


2. Press the Pair button on your PL-AC56. Wait until the powerline LED lights up, indicating that a secure powerline network has been created.

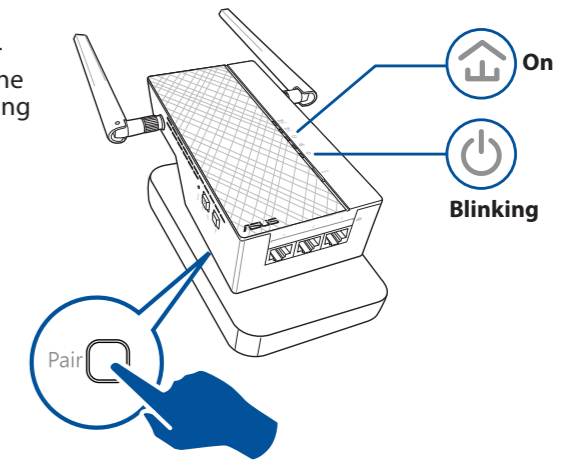


Joining a secure powerline network

1. Press the Pair button on a powerline device in the powerline network.

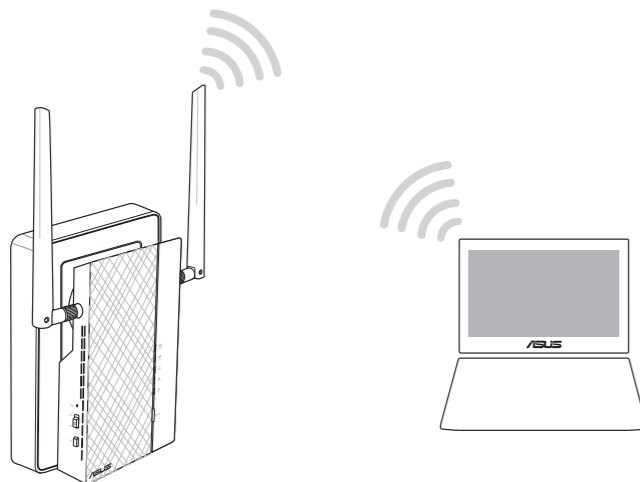


2. Press the Pair button on another extender or adapter. Wait until the powerline LED lights up, indicating that pairing is successful.

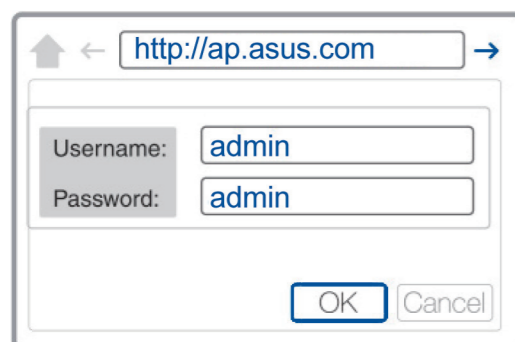


PL-AC56 Wireless Settings (optional)

1. Set up your PL-AC56 via wired or wireless connection. For details, refer to the section **Plug-n-Play** on the previous page.



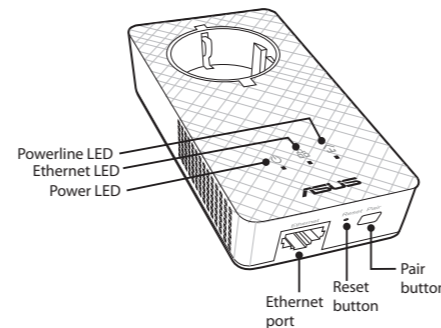
2. Go to <http://ap.asus.com>
3. Use **admin** as both the username and password.



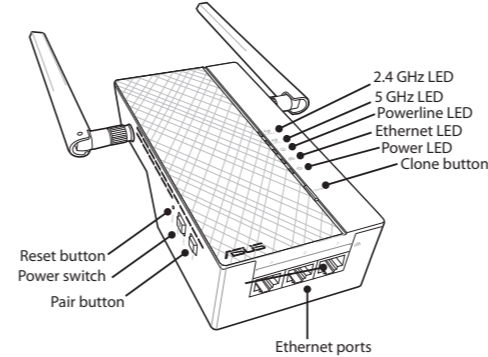
4. Go to **Wireless > General** and set the SSID (network name) and password.
5. When done, click **Apply**.

LEDs and buttons

PL-E56P Adapter



PL-AC56 Extender



LED	STATUS	DESCRIPTION
2.4G /5G Wi-Fi	Blinking rapidly	Your PL-AC56 is cloning the parent AP's SSID and password.
	Blinking every second	Your PL-AC56 is resetting to the factory default settings.
Powerline	On	The device is connected to one or more powerline devices.
	Off	The device is not connected to any powerline devices.
	Blinking	In Power-Saving mode, the powerline LED blinks every 15 seconds.
Ethernet	On/Off	A device is connected or not connected to the Ethernet port.
	Blinking	The powerline adapter is transferring data via the Ethernet port.
Power	On/Off	Your device is on/off. When switched on, the power LED turns from red to green in about one minute, indicating that it is ready to use.
	Blinking	Blinking every second: Pairing is in progress.

BUTTON	DESCRIPTION
Clone	Press and hold the button for about one second to start cloning the parent AP's SSID and password.
Pair	Press and hold the button for about one second to start the pairing process.
Reset	Press and hold the button for about five seconds to restore your device to the factory default settings.

Frequently Asked Questions (FAQs)

Q1: How do I reset my PL-AC56?

With your PL-AC56 switched on, use a pin to press and hold the Reset button until the Wi-Fi LED starts blinking. When the power LED turns green and the Wi-Fi LED is on, the reset process is completed.

Q2: My devices cannot connect to the Internet.

- Check your Internet connection.
- Ensure that the powerline LED lights up on all your powerline devices in the network. If they do not, try pairing the devices again.
- Ensure that all your devices are in the same network.
- Ensure that all the extenders and adapters are in the same electrical circuit.

Q3: My successfully-paired PL-AC56 does not work after I moved it to a new location.

- Try to pair your extender with your adapter again. For details, see **Pairing devices via the Pair button**.
- Check for any possible interferences that may be too close to your extenders or adapters such as air conditioners, washing machines, and other electrical appliances.
- Ensure that all your devices are in the same network.
- Ensure that all the extenders and adapters are in the same electrical circuit.

IMPORTANT! Ensure that you plug PL-AC56/PL-E56P to wall outlets in the same electrical circuit.

